



# **Crime Analysis Report May 2018**

**Det. Sgt. Kurt Fasulo #63**

CALEA 15.3.1

# Table of Contents

Crime Analysis Definition.....	3
Crime Analysis Narrative Report.....	4
Appendix A (Crime Graph).....	7
Appendix B (Burglary Graphs).....	8
Appendix B (Criminal Mischief Graphs).....	11
Appendix C (Larceny Graphs) .....	14

## Crime Analysis

A set of systematic, analytical processes directed at providing timely and pertinent information relative to crime patterns and trend correlations to assist the operational and administrative personnel in planning the deployment of resources for the prevention and suppression of criminal activities, aiding the investigative process, and increasing apprehensions and the clearance of cases. Within this context, Crime Analysis supports a number of department functions including patrol deployment, special operations, and tactical units, investigations, planning and research, crime prevention, and administrative services (budgeting and program planning). --Steven Gottlieb et al., 1994, "Crime Analysis: From First Report to Final Arrest."

*TO: Office of the Chief*

*FROM: Det. Sgt. Kurt Fasulo #63*

*SUBJECT: Crime Analysis Report May 2018*

*During the month of May 2018, the Guilford Police Department had the following **Part 1** and selected **Part 2** Crimes reported: Reference Appendix A for further information. This information was compiled via the NEXGEN system utilizing a query of all Part 1 Crimes and select Part 2 crimes from the computer database. A full review of each queried case file report was completed.*

The Guilford Police Department investigated **1090** cases for the month of May. This is a eighteen percent (18%) increase in calls from the previous month.

### **Burglary Cases**

There were two reported Burglaries for the month of May. The two cases do not appear to be connected to each other. One case involved items being stolen from the interior of an unlocked residence. The second case saw force used to gain entry to a storage area in a condominium complex and the suspect was arrested for that incident. There were again cases of unlocked vehicles being entered and items stolen from within. These thefts from unlocked vehicle incidents would result in a criminal charge of burglary, however for reporting purposes those cases can be found in the larceny section of this report.

The number of burglaries remained the same from April to May.

There was no crime pattern developed, thus no response plan was developed.

Reference Appendix B for a graphic representation.

### **Criminal Mischief Cases:**

There was a total of nine (9) criminal mischief cases filed for the month of May. This is a eighteen (-18%) percent decrease in criminal mischief cases from April to May. Two (2) of these cases involved damage to public property, seven (7) to private property.

The times and dates reported are depicted in the graphic representation. Some of these are the time the report was filed and not the time at which the crime is being committed. Three (3) of the nine cases show an accurate representation of the time these crimes were committed. The others were reported after the damage was observed and the exact time and date of the occurrence is unknown. There were four (4) cases of mailboxes being damaged during the overnight or late evening hours.

There were no arrests made for criminal mischief in the month of May.

The criminal mischief cases for this month were dispersed throughout the month and there was no pattern developed. Consistent with most months, the majority of criminal mischief takes place in the late evening, early morning hours on weekends. Most complaints taken after the damage was observed were received on Sunday or Monday mornings. Patrols are aware of this pattern and have been alerted to identifiable characteristics of this type of crime.

Reference Appendix C for a graphic representation.

### **Larceny Cases:**

There were twenty-one (21) larceny cases reported during the month of May. One (1) of the twenty-one cases were solved. There were no arrests made as a result of these larceny cases. One incident involved a bad check issued. The complainant no longer wished to pursue charges once payment was received. There were three (3) cases in which the complainant did not wish to pursue criminal charges against the suspect.

The larceny types are as follows: twelve (12) thefts from a motor vehicle, five (5) shopliftings, one (1) bad check, and two (2) general larceny.

For fourteen (14) of these larceny cases the exact date and time that the larceny occurred has not been determined. Thus, the date and time shown reflects only that of the date/time reported.

The number of larceny cases increased sixty-one percent (61%) from April to May.

The fraud cases for the month of May are as follows: Nine (9) General Fraud, One (1) Fraud Flim Flam, One (1) Fraud with Credit Card. These other fraud incidents all involved complainants who were reimbursed or did not experience any loss, thus these cases are not included in the monthly totals for larceny cases.

The thefts from motor vehicle larcenies nearly all involved items being removed from unlocked motor vehicles. This department continues to educate the public on securing valuables through social media platforms. There has been a spike in these incidents within the shoreline area and Guilford Police Department is corresponding with neighboring departments to share intelligence and develop a response plan.

Reference Appendix C for a graphic representation.

### **Robbery Cases:**

None reported.

**Larceny of MV Cases:**

There was one larceny of a motor vehicle during the month of May. This is a one hundred percent (100%) increase in motor vehicle larcenies from April, which had none. The vehicle has since been recovered and processed for evidence. The vehicle was stolen with the keys in it and is connected to a number of larcenies from motor vehicles in the same area on that same evening/overnight.

**Aggravated Assault/Simple Assault:**

There were two (2) assaults reported during the month of May. One case resulted in the arrest of the suspect and the complainant in the second case did not wish to pursue charges. All parties were identified and there were no unknown assailants.

There were no assaults reported during the month of April thus there was a two hundred percent (200%) increase in assaults from April to May.

**Arson Cases:**

None reported.

**Rape/Sex offense Cases:**

There were four (4) sexual assaults reported during the month of May. None of the four cases occurred during the month of May. Per Connecticut General Statute, the details of these incidents will not be disclosed.

**Murder Cases:**

None reported.

**Information and Intelligence received on criminal activity:**

CTIC provided LEO intelligence during this month. The New England State Police Information Network also served as a source of intelligence as did the Law Enforcement Information Exchange (LInX). Guilford Police also monitors Crimedex Law Enforcement Portal for updated information on financial crime trends.

Intelligence meetings were held with the Middlesex County Detective Association, New Haven ISU, and New Haven MDT in regard to ongoing criminal activity in all attending agencies' jurisdictions. The Guilford Police Department has also received information from anonymous sources for suspected criminal activity.

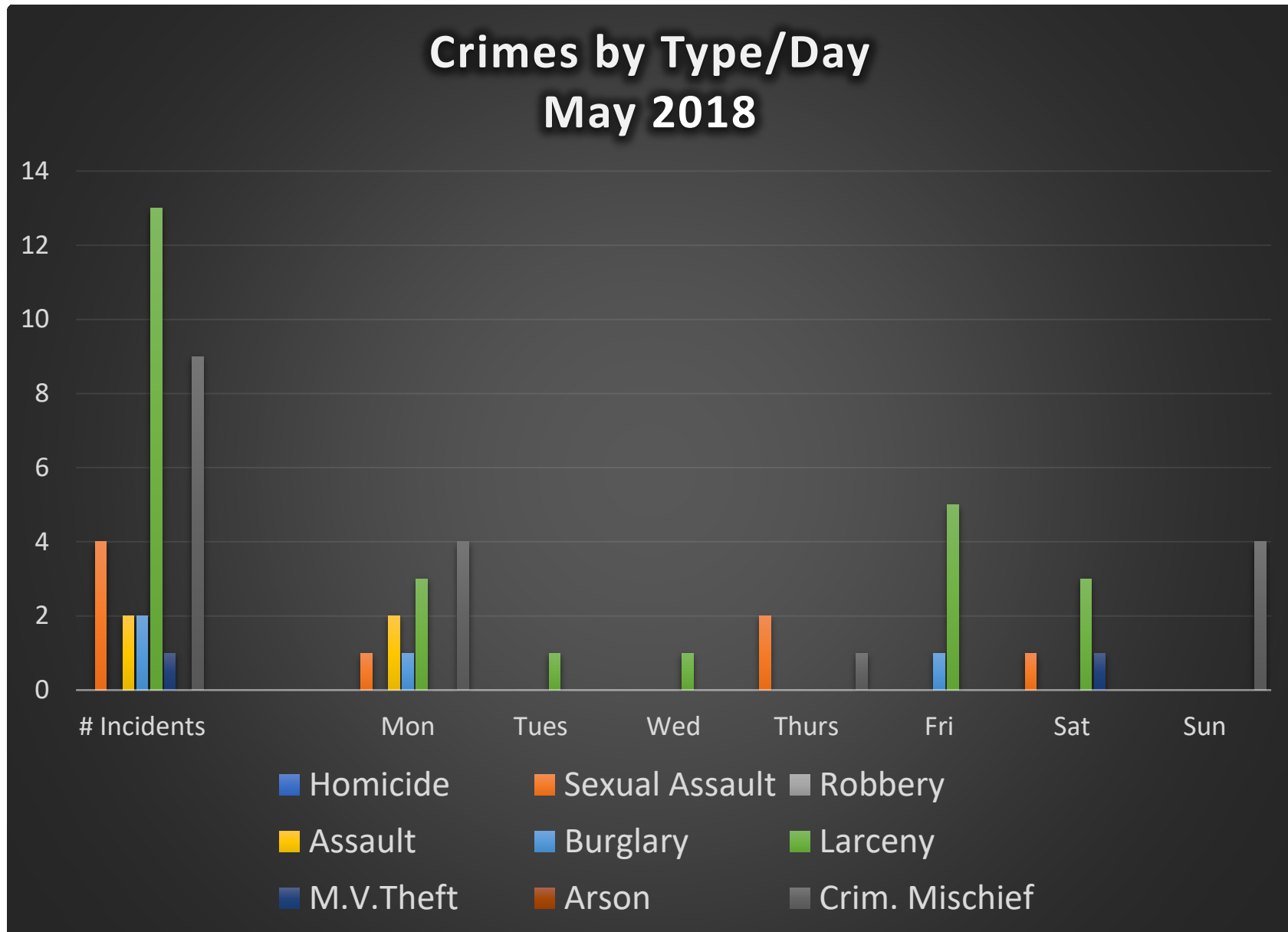
Guilford Police Department has been corresponding with the Branford Police Department and surrounding agencies regarding stolen motor vehicles and burglaries taking place in each agency's respective jurisdiction. The goal of the collaboration is to gather enough

information to identify trends which will assist in developing response plans as well as suspect information.

Respectfully submitted,

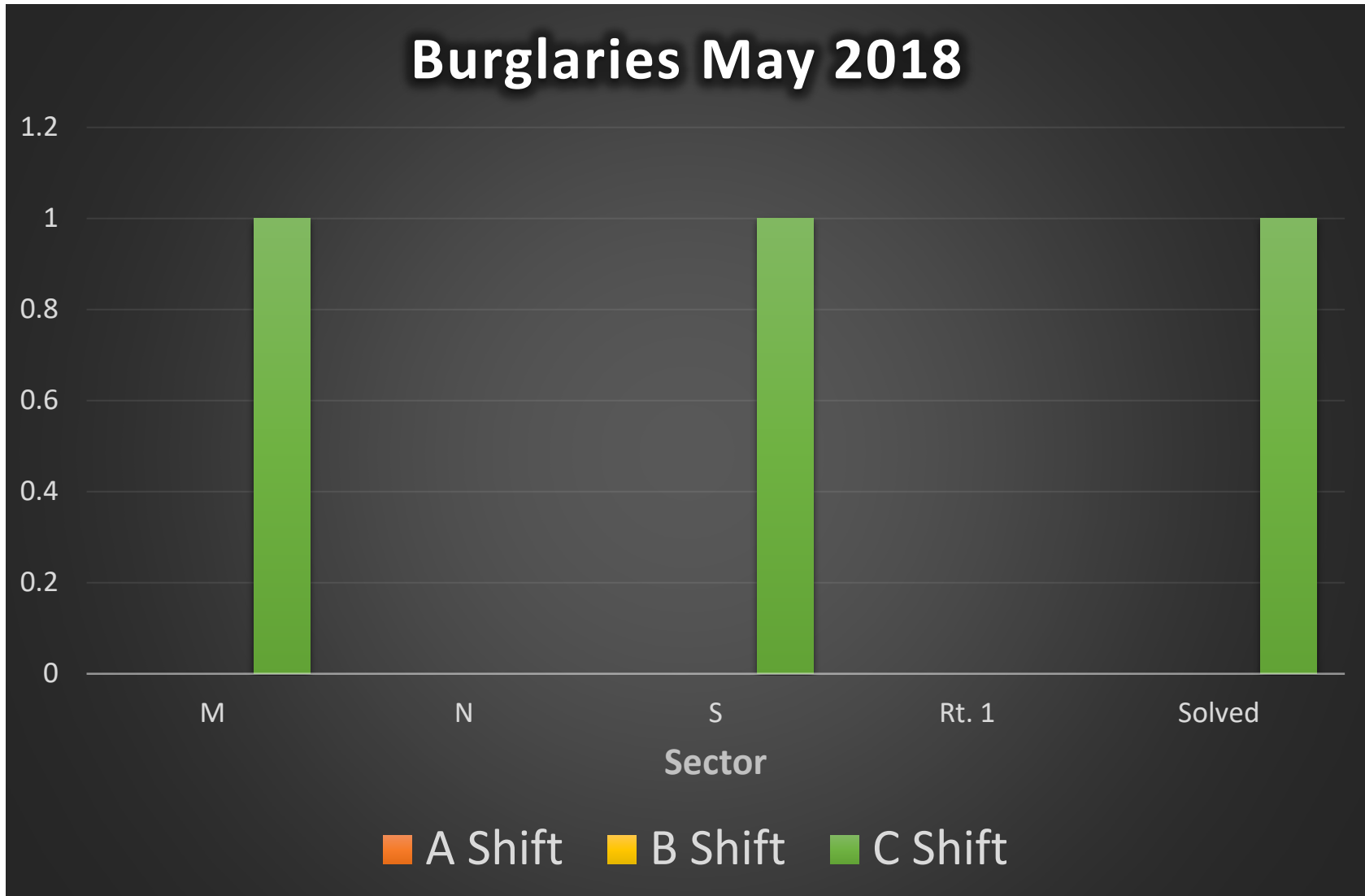
*Det. Sgt. Kurt Fasulo*

## Appendix A - Crime

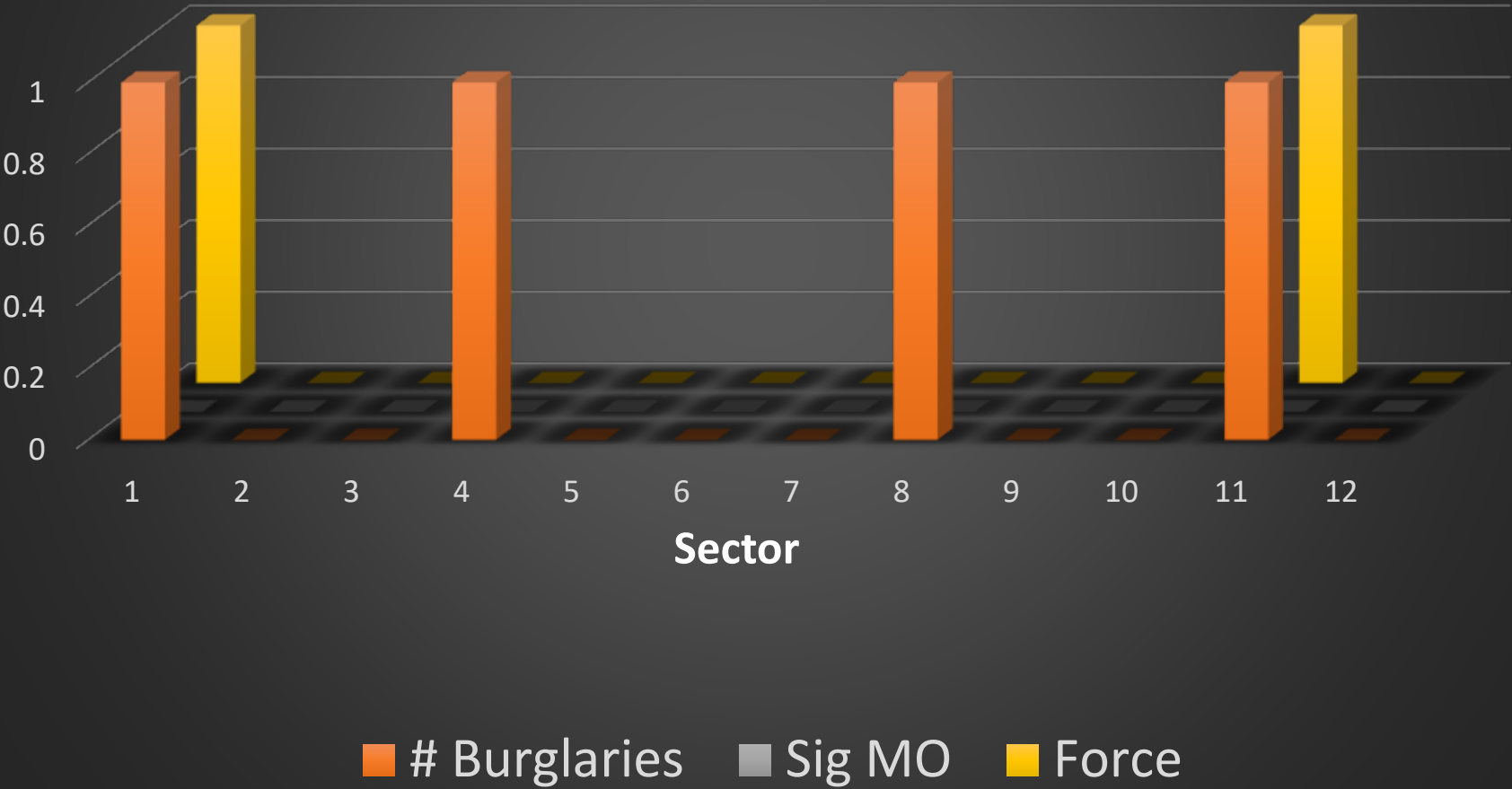




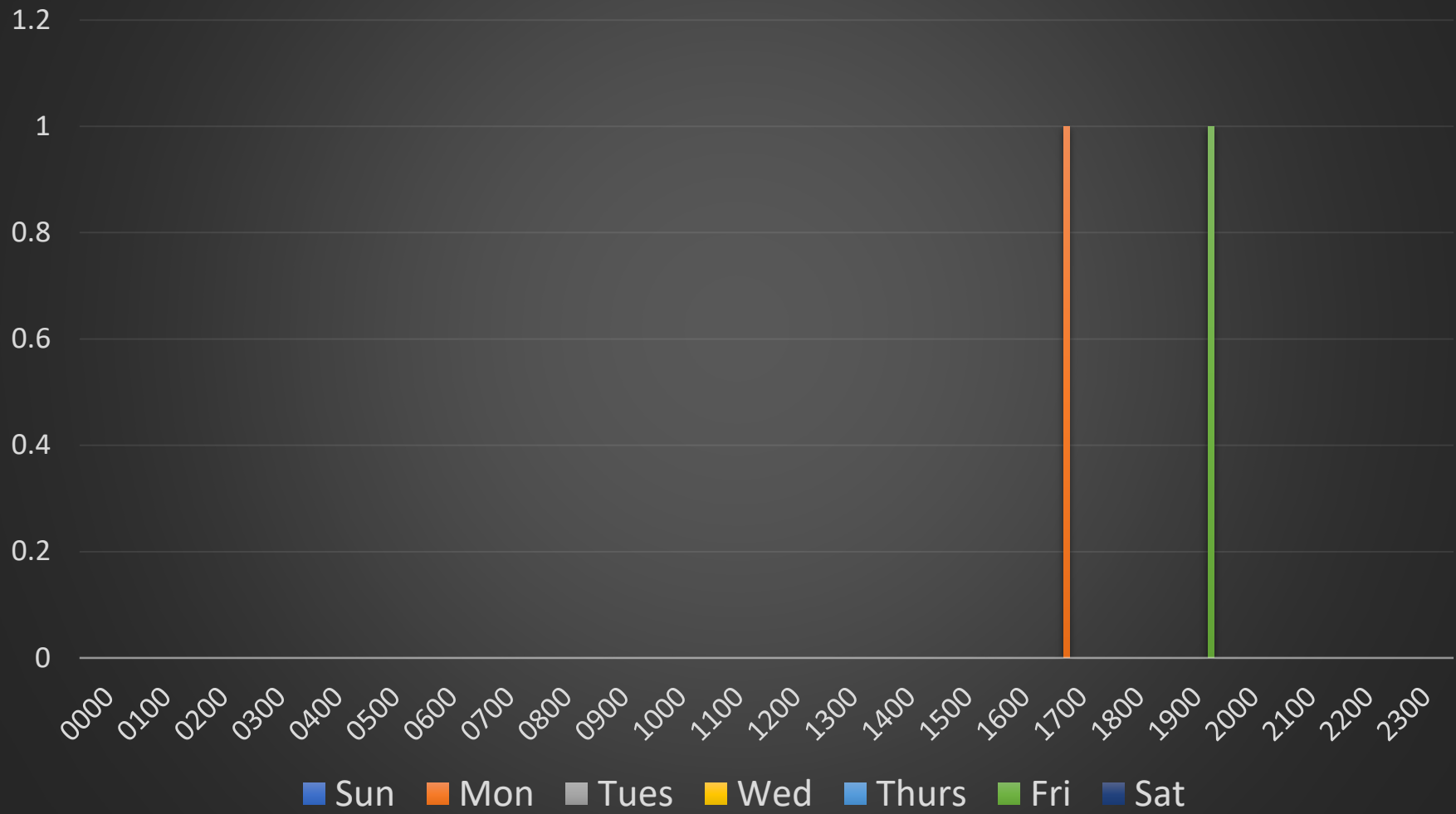
## *Appendix B – Burglary*



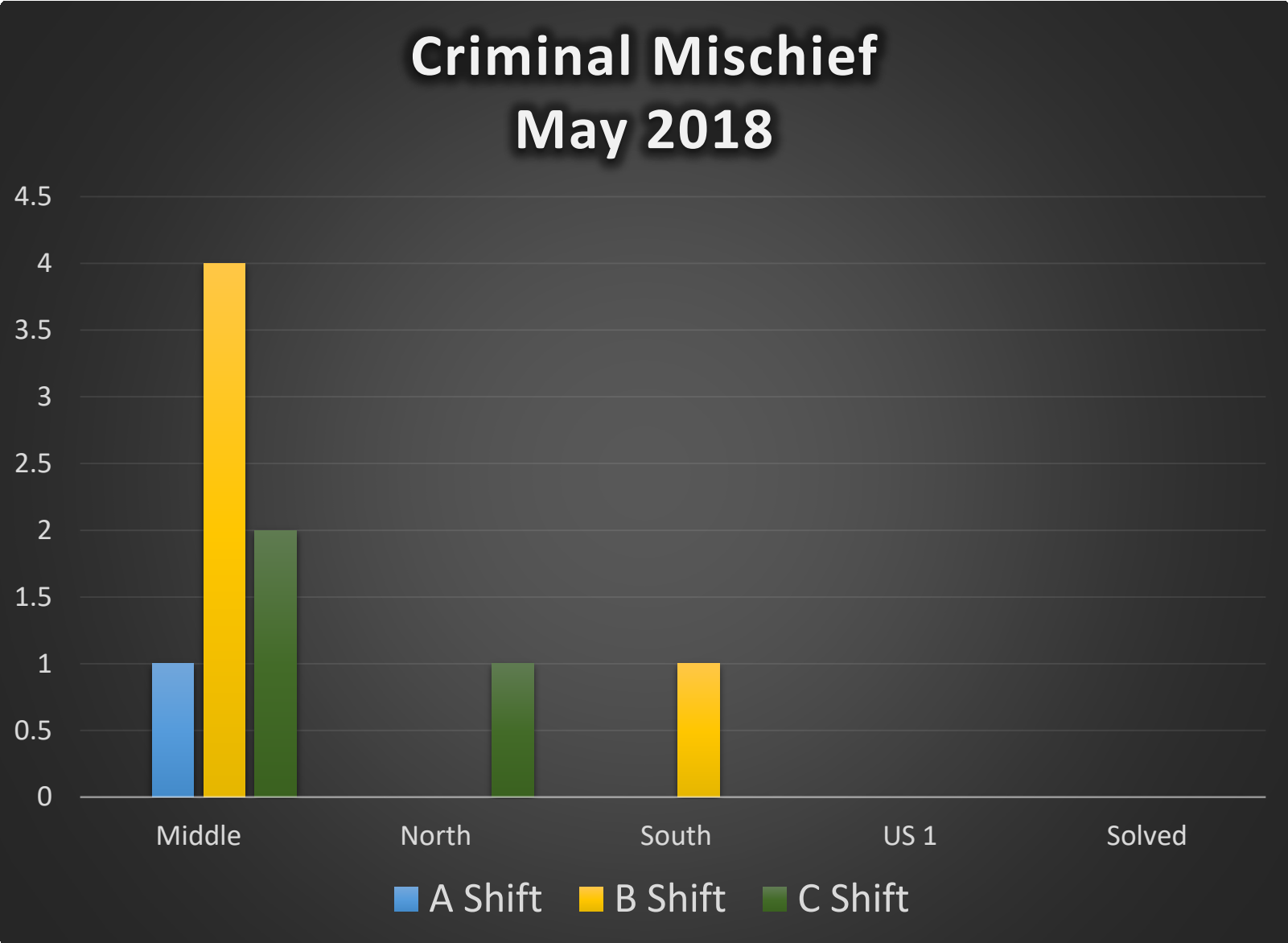
# Burglary Sector Breakdown May 2018



# Burglary Date/Time Breakdown May 2018

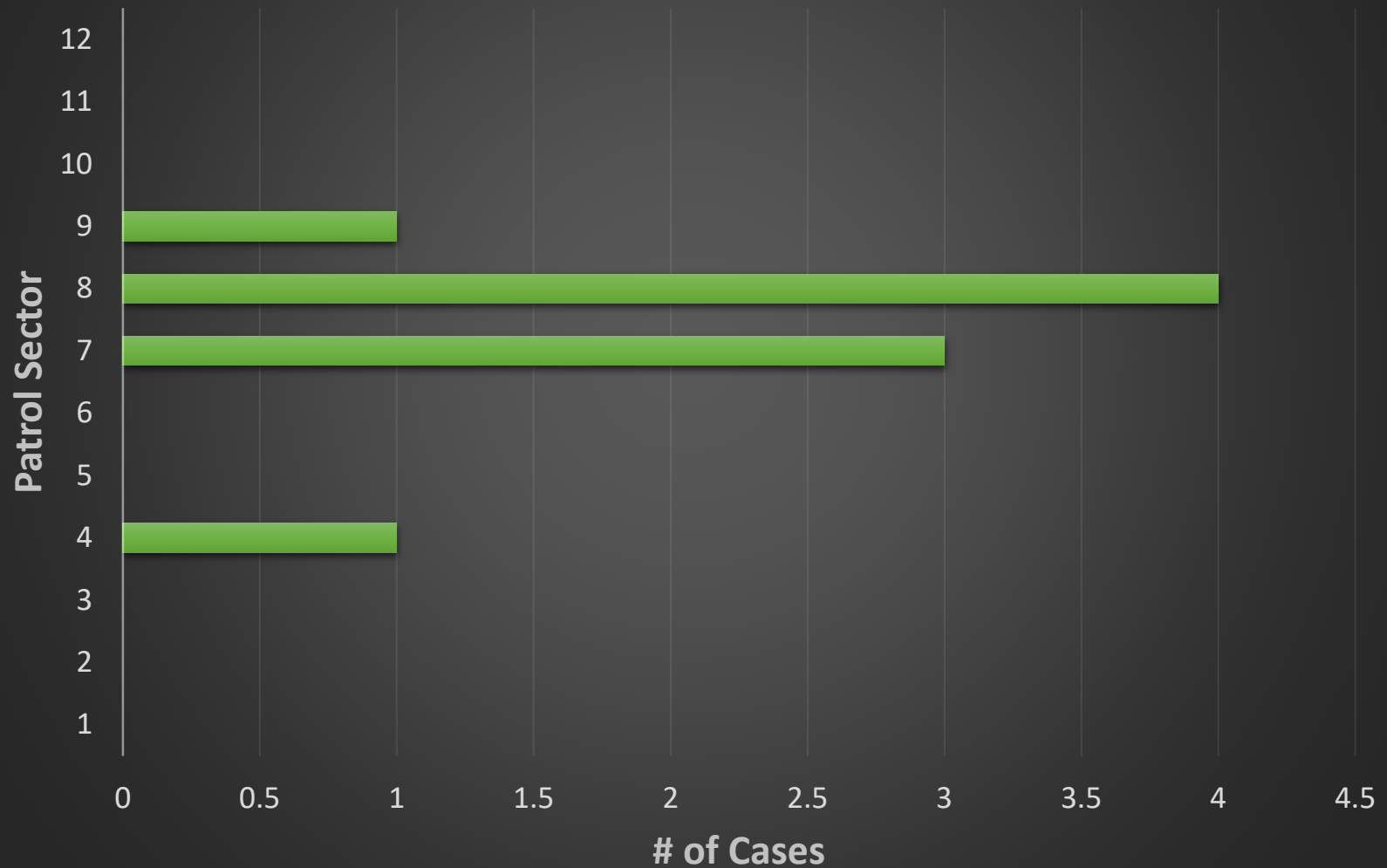


*Appendix C - Criminal Mischief*

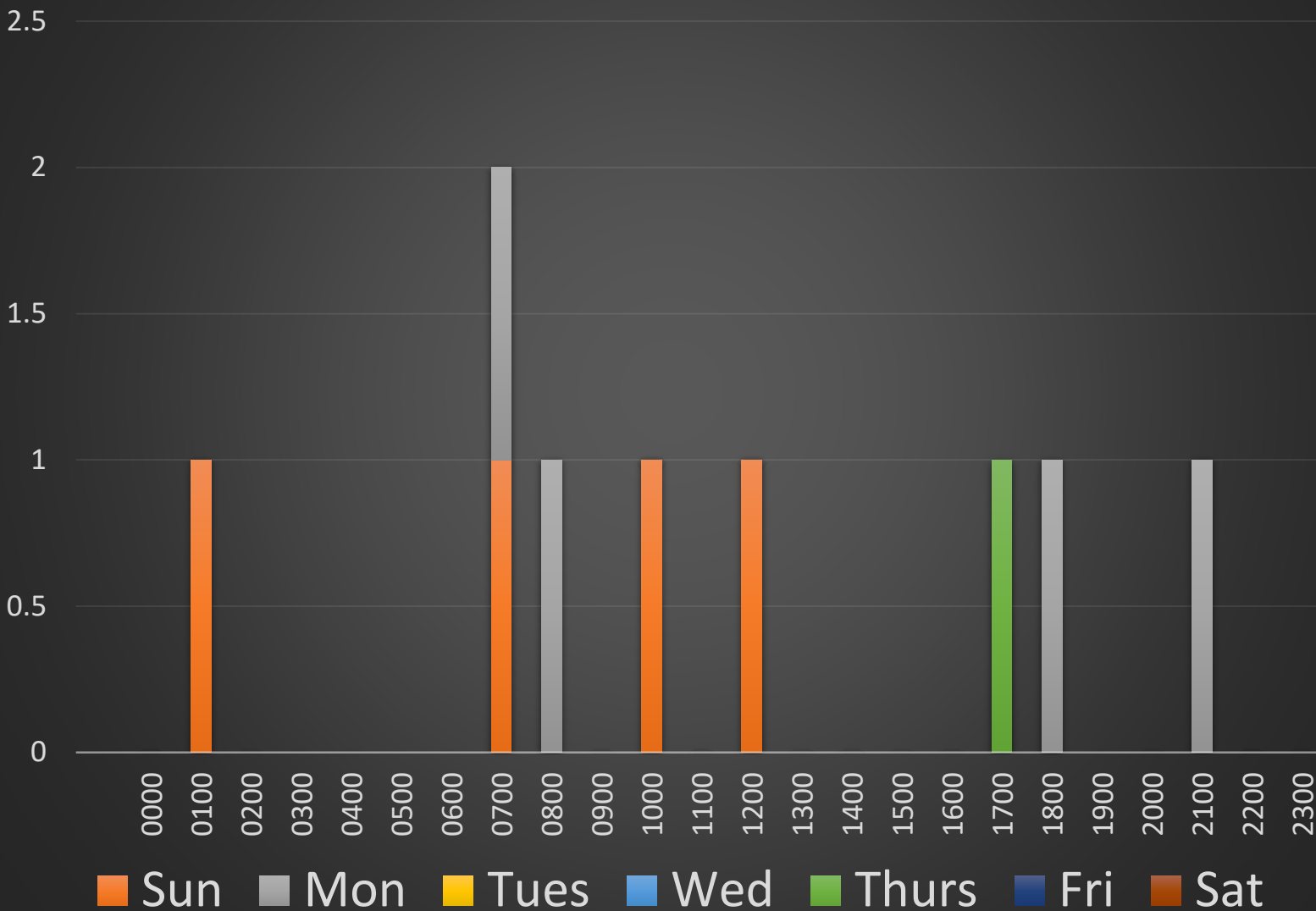


# Cases by Sector

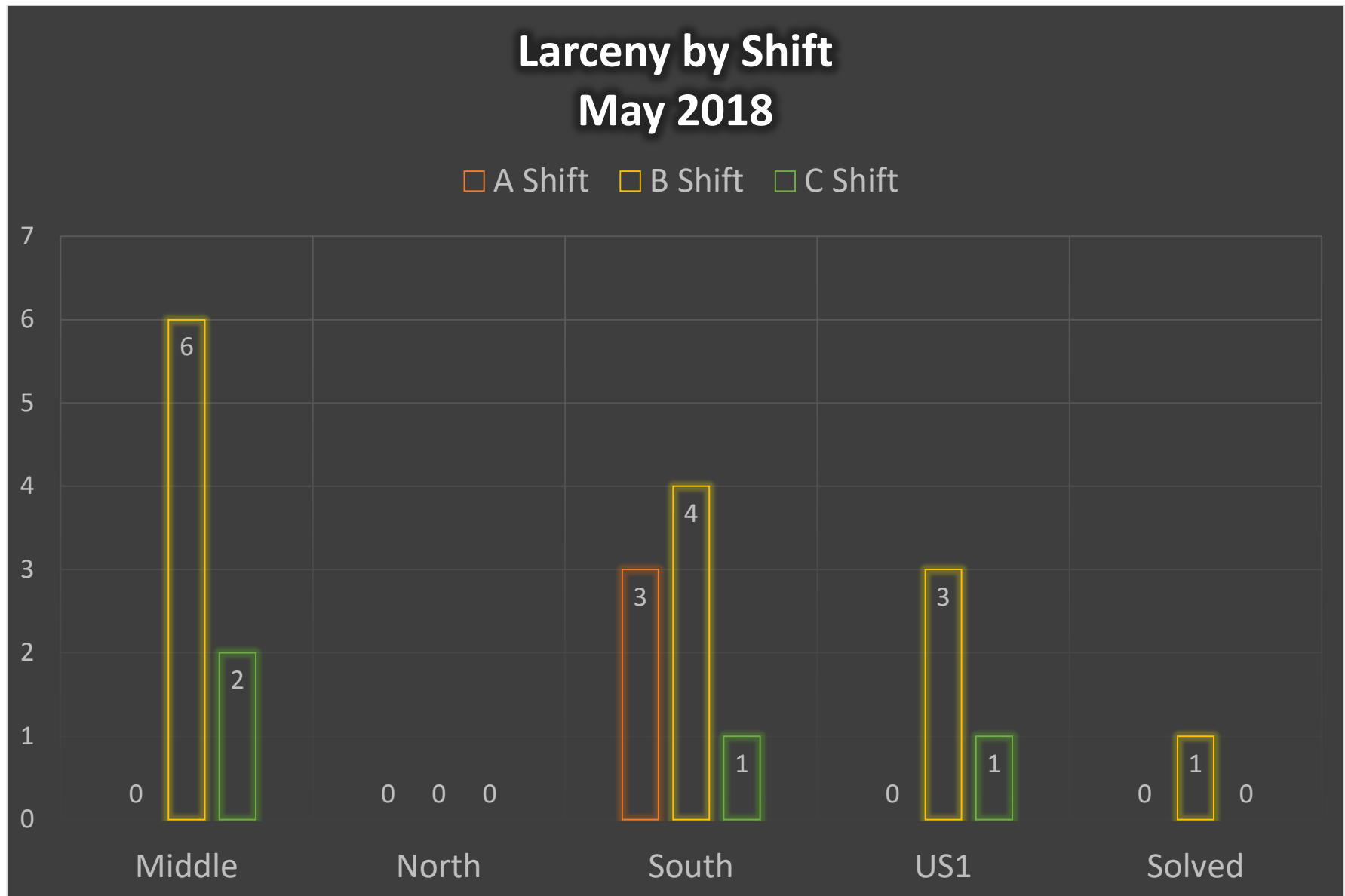
## Crim. Mischief - May 2018



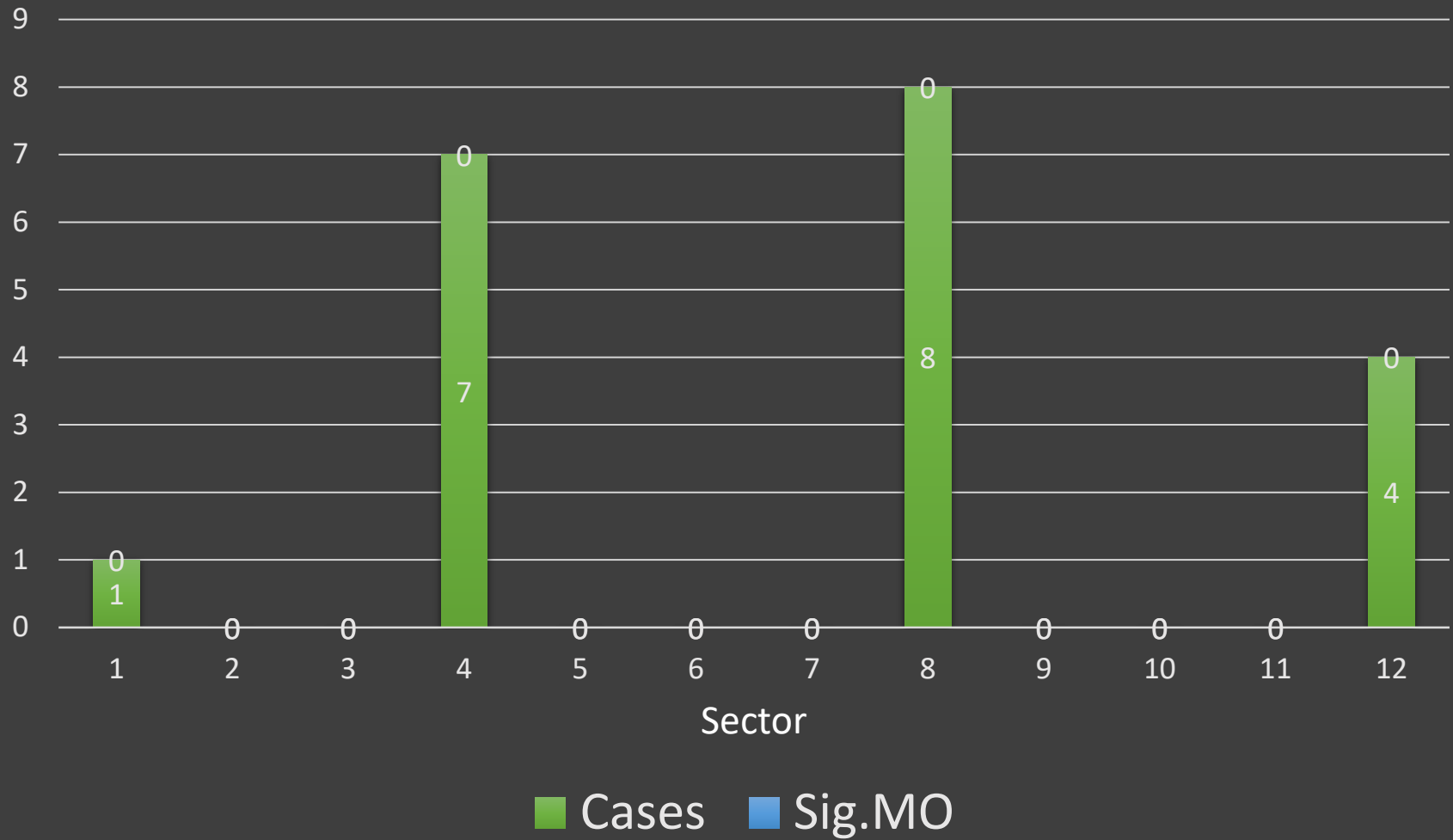
# Day/Time Breakdown Crim. Mischief May 2018



## Appendix D – Larceny



## Larceny by Sector May 2018





# Day/Time Breakdown Larceny May 2018

