



# **Crime Analysis Report December 2016**

**Det. Sgt. Brooks #62**

CALEA 15.3.1

# Table of Contents

Crime Analysis Definition.....	3
Crime Analysis Narrative Report.....	4
Appendix A (Crime Graph).....	6
Appendix B (Burglary Graph).....	7
Appendix C (Criminal Mischief Graph).....	8
Appendix D (Larceny Graph) .....	9

## Crime Analysis

A set of systematic, analytical processes directed at providing timely and pertinent information relative to crime patterns and trend correlations to assist the operational and administrative personnel in planning the deployment of resources for the prevention and suppression of criminal activities, aiding the investigative process, and increasing apprehensions and the clearance of cases. Within this context, Crime Analysis supports a number of department functions including patrol deployment, special operations, and tactical units, investigations, planning and research, crime prevention, and administrative services (budgeting and program planning). --Steven Gottlieb et al., 1994, "Crime Analysis: From First Report to Final Arrest."

*TO: Office of the Chief*

*FROM: Det. Sgt. Sandra Brooks #62*

*SUBJECT: Crime Analysis Report December 2016*

*During the month of December 2016 the Guilford Police Department had the following **Part 1** and selected **Part 2** Crimes reported: Reference Appendix A for further information. This information was compiled via the AS400 system and RMS System utilizing a query of all Part 1 Crimes and select Part 2 crimes from the computer databases. A full review of each queried case file report was completed.*

The Guilford Police Department investigated **849** cases for the month of December.

**Burglary Cases**

There were a total of (4) burglary cases reported. (1) was a forced commercial burglary to a liquor store, (2) were of residences with (1) having nothing taken and the other an attempted only. And (1) was a burglary to a building. (1) burglary was solved. Reference Appendix B for a graphic representation.

**Criminal Mischief Cases:**

There were a total of (5) criminal mischief cases filed; (4) of the cases were on private property and (1) was on public property. Reference Appendix C for a graphic representation.

**Larceny Cases:**

There were a total of (32) larceny complaints filed. A detailed examination of these cases revealed the following details: Of the (32) cases, (13) were solved. A total breakdown of the types of larceny cases are as follows: (11) general larceny cases, (7) shoplifting, (7) thefts from a vehicle, (1) theft of a vehicle/recovered, (1) theft of services, (3) thefts from a building and (2) thefts from residences. Reference Appendix D for a graphic representation.

**Robbery Cases:**

There were (0) robbery cases filed.

**Arson Cases:**

None Reported

**Assaults:**

There were (2) assaults both involving minor children (Family Violence). In accordance with Connecticut General Statutes details of these assault cases involving minors remain sealed.

**Rape/Sex offense Cases:**

One (1) incident was reported; in accordance with Connecticut General Statutes details of all sexual assault cases details remain sealed.

**Murder Cases:**

None reported

**Information and Intelligence received on criminal activity:**

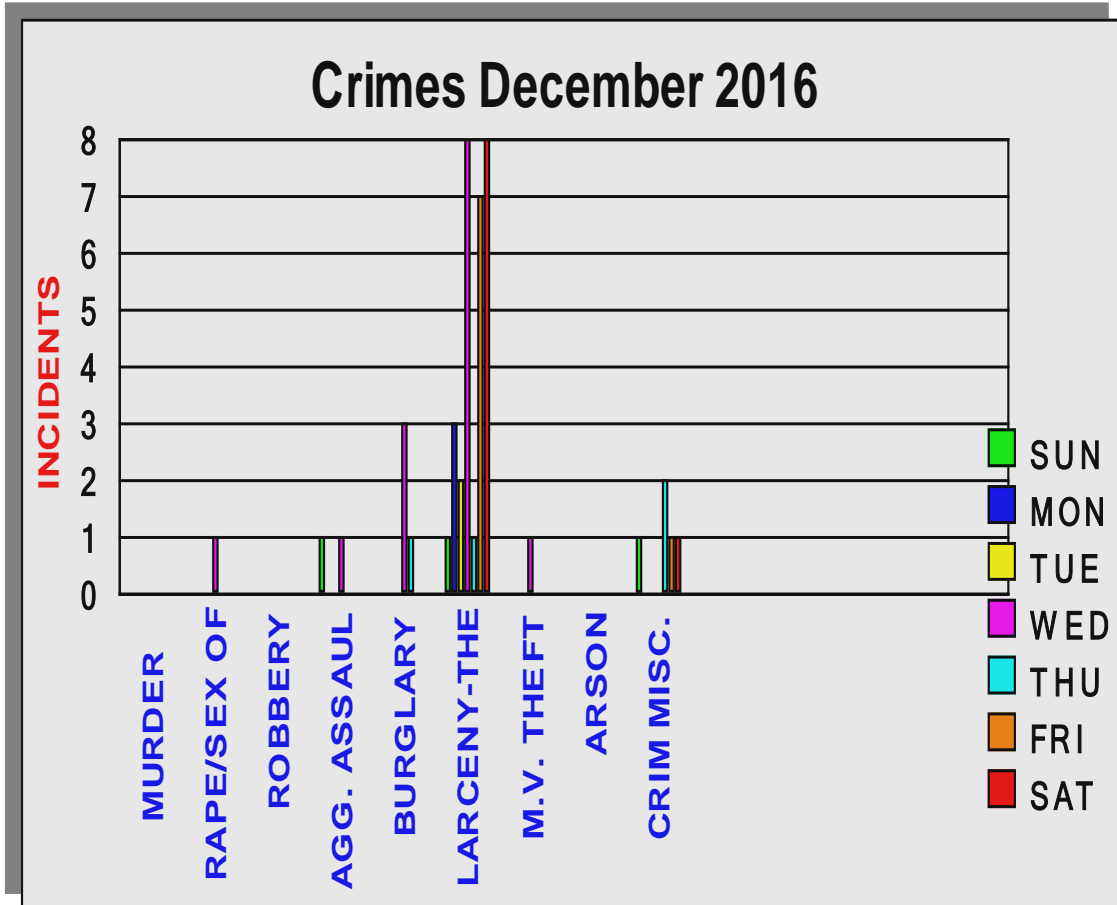
CTIC provided LEO intelligence during this month.

Intelligence meetings were held with the Middlesex County Detective Association, New Haven ISU, MDT and the Shoreline Detectives in regard to on-going criminal activity in all our jurisdictions.

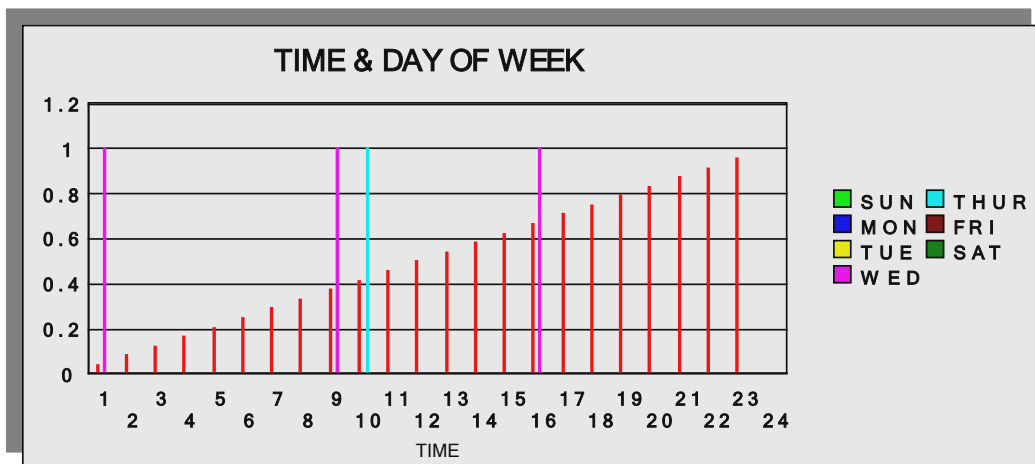
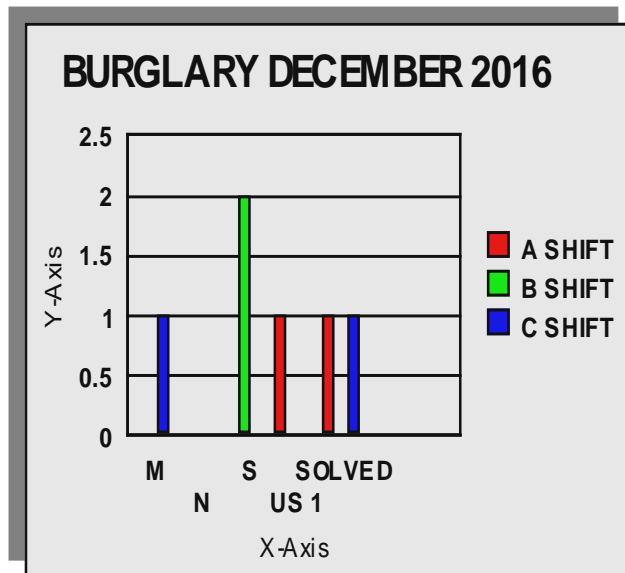
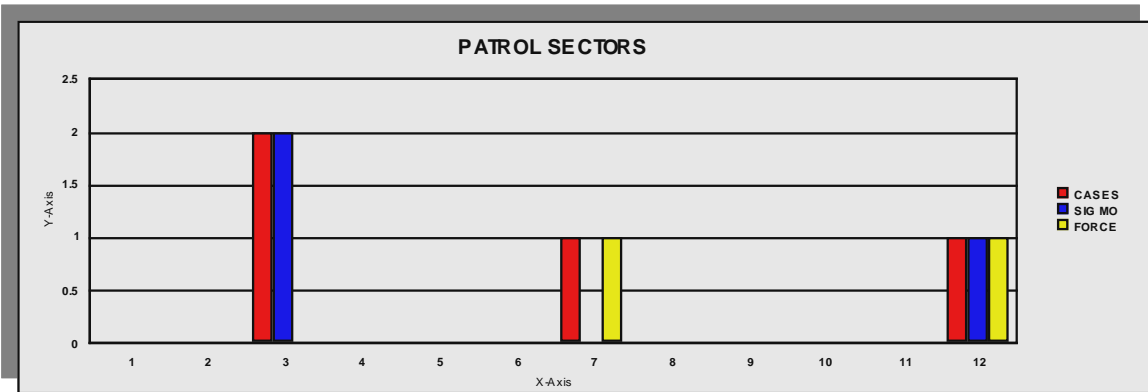
Respectfully submitted,

*Det. Sgt. Brooks #62*

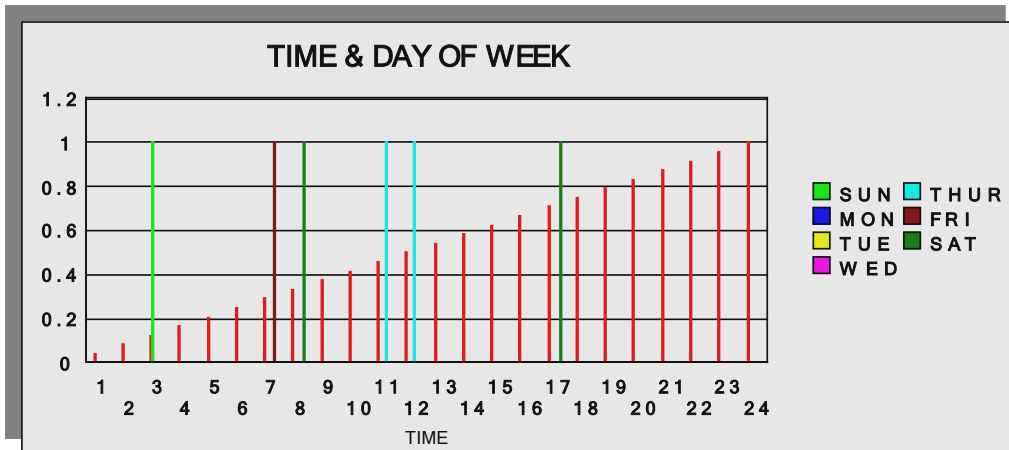
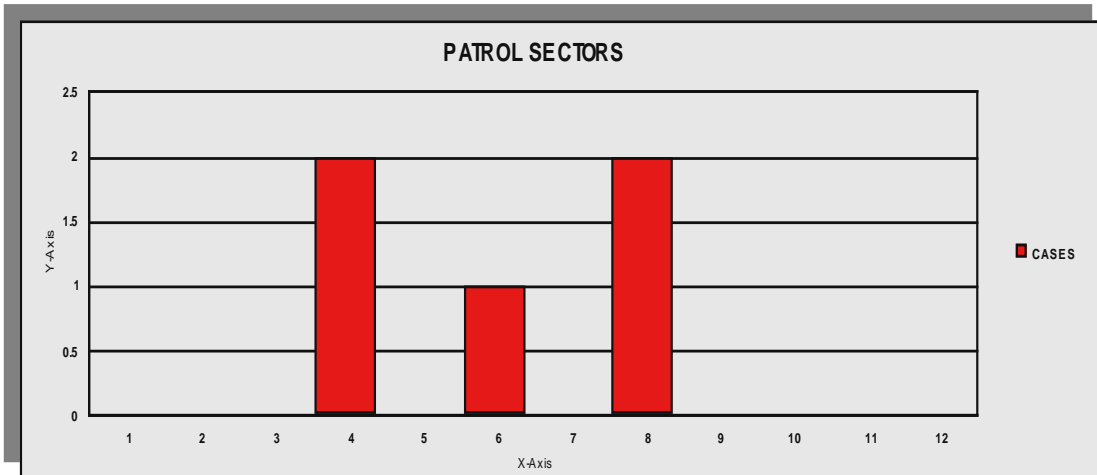
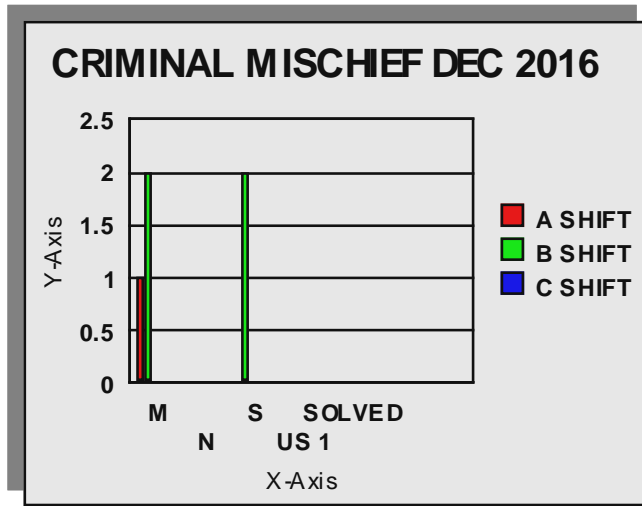
# APPENDIX A-Crime



# Appendix B-Burglary



# Appendix C-Criminal Mischief





# Appendix D-Larceny

