



Crime Analysis Report June 2013

Prepared by Det. Sgt. Jeffrey Provencher /68

CALEA 15.3.1

Table of Contents

Crime Analysis Definition.....	3
Crime Analysis Narrative Report.....	4
Appendix A (Crime Graph).....	6
Appendix B (Burglary Graph).....	7
Appendix C (Criminal Mischief Graph).....	8
Appendix D (Larceny Graph)	9

Crime Analysis

A set of systematic, analytical processes directed at providing timely and pertinent information relative to crime patterns and trend correlations to assist the operational and administrative personnel in planning the deployment of resources for the prevention and suppression of criminal activities, aiding the investigative process, and increasing apprehensions and the clearance of cases. Within this context, Crime Analysis supports a number of department functions including patrol deployment, special operations, and tactical units, investigations, planning and research, crime prevention, and administrative services (budgeting and program planning). --Steven Gottlieb et al., 1994, "Crime Analysis: From First Report to Final Arrest."

TO: Office of the Chief

FROM: Det. Sgt. Jeffrey Provencher

SUBJECT: Crime Analysis Report June 2013

*During the month of June 2013. The Guilford Police Department had the following **Part 1** and selected **Part 2** Crimes reported: Reference Appendix A for further information. This information was compiled via the AS400 system utilizing a query of all Part 1 Crimes and select Part 2 crimes from the computer database. A full review of each queried case file report was completed.*

The Guilford Police Department investigated 984 cases for the month of June.

Murder Cases:

None reported.

Sexual Assault:

There was (1) Sexual Assault report and in accordance with Connecticut General Statutes details of all sexual assault cases details remain sealed.

Robbery Cases:

None Reported.

Aggravated Assault

None Reported.

Burglary Cases

There were (4) burglary cases filed. (3) Residential burglaries, (1) commercial burglary, with (1) involving force. Arrests have been made in (1) case. Reference Appendix B for a graphic representation.

Larceny Cases:

There were a total of (16) larceny complaints filed. (4) Were thefts from buildings, (16) general larcenies. There were arrests made in (2) of the cases, and (8) other cases were solved with no arrest. Reference Appendix C for a graphic representation.

Motor Vehicle Thefts:

There was (1) motor vehicle theft reported, and there is a warrant pending.

Arson Cases:

None Reported

Criminal Mischief Cases:

There were a total of (14) criminal mischief complaints filed, (3) were damage caused to a motor vehicle (4) were mailbox damage, and (2) were damage to a building and (5) were miscellaneous damage. An arrest is pending for (1) case. Reference Appendix D for a graphic representation.

Information and Intelligence received on criminal activity:

CTIC provided LEO intelligence during this month.

Intelligence meetings and legal update briefings were held at the New Haven County Investigative Briefing, as well as the Middlesex County Detective Association and the Shoreline Detectives in regard to on-going criminal activity in all our jurisdictions.

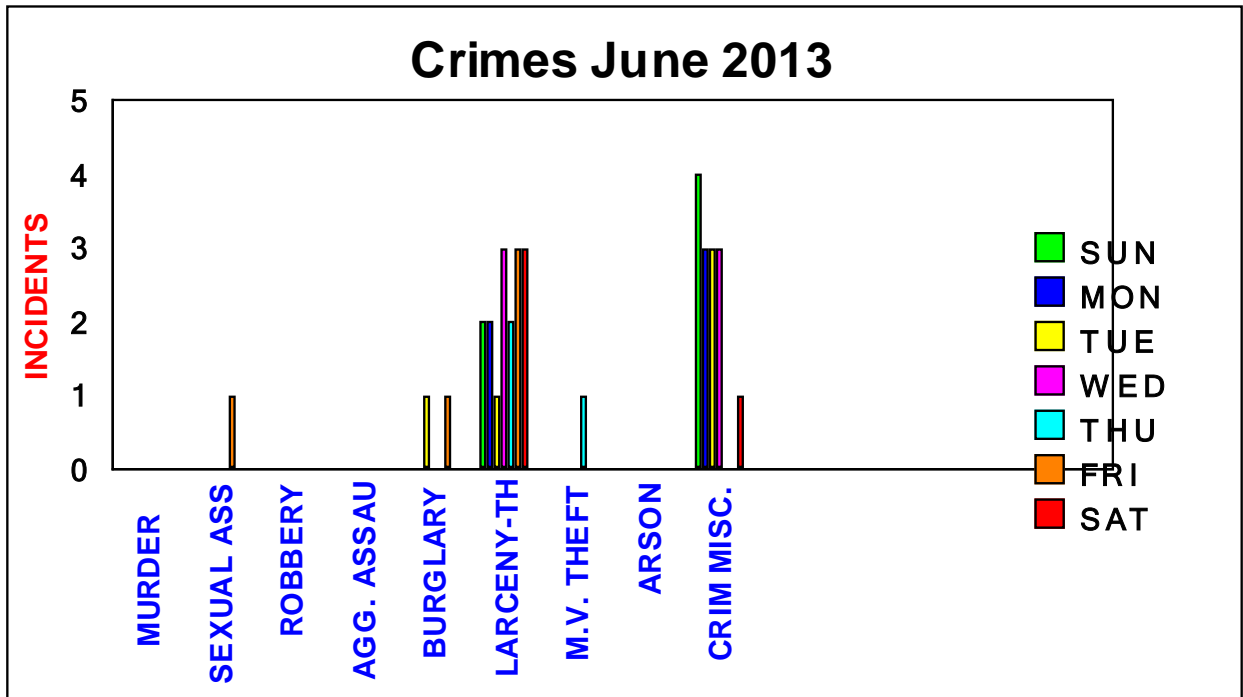
Sincerely,

Det. Sgt. Jeffrey Provencher /68

Appendix-A

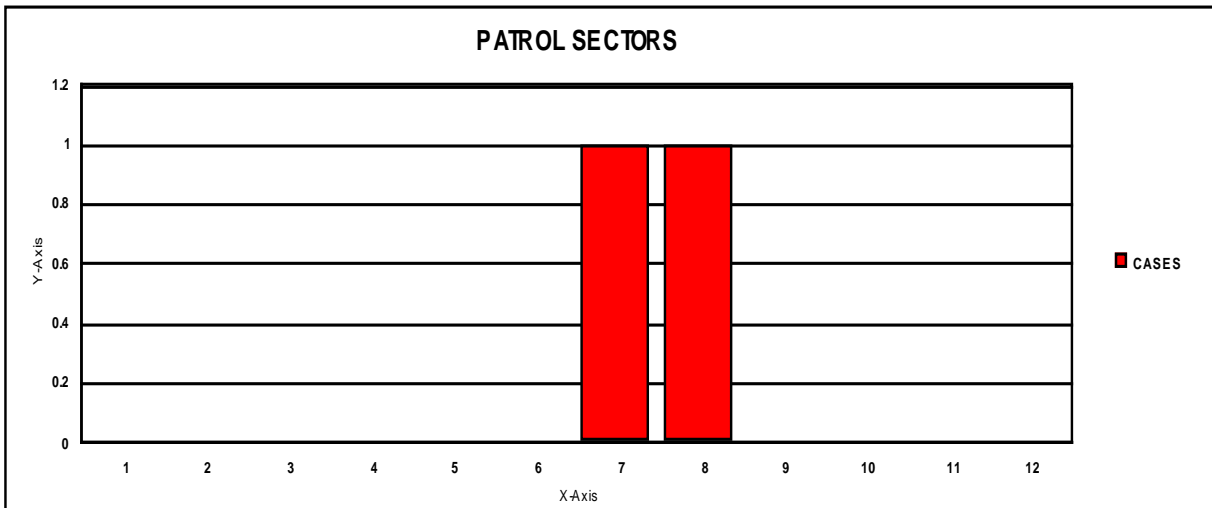
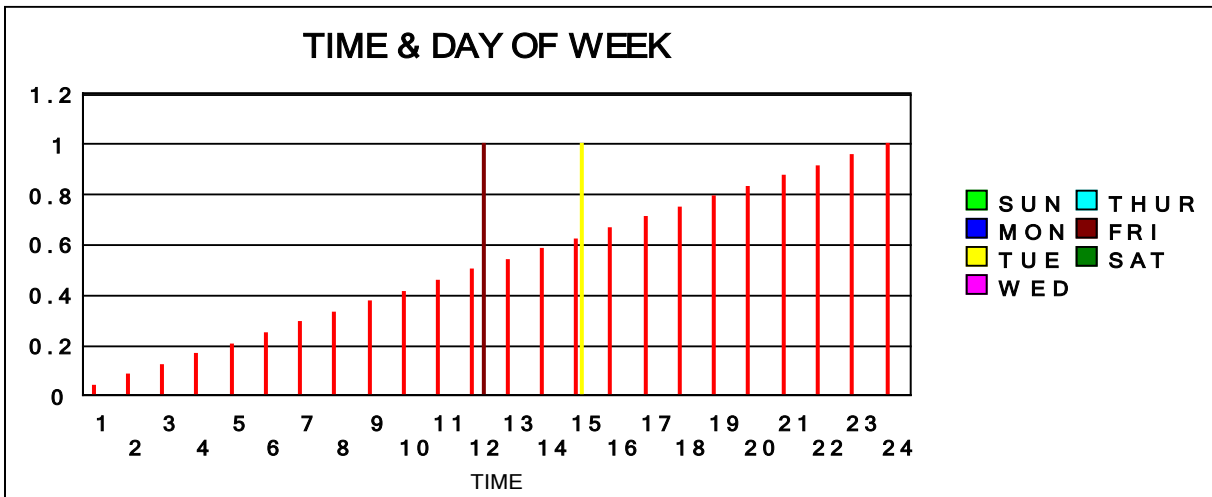
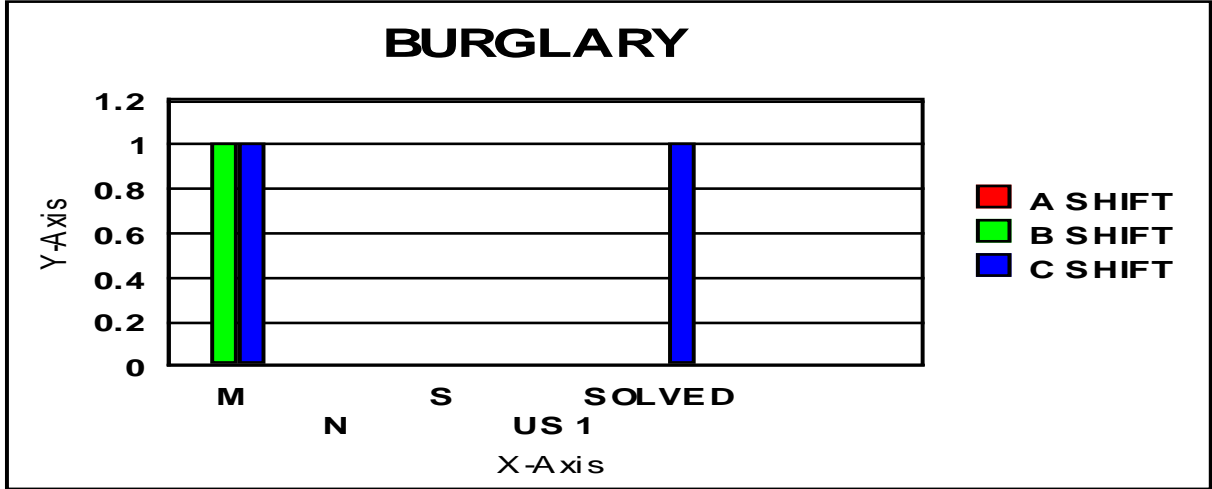
**CRIMES JUNE
2013**

	SUN	MON	TUE	WED	THU	FRI	SAT	TOTAL
MURDER								
RAPE							1	1
ROBBERY								
AGG. ASSAULT								
BURGLARY			1				1	2
LARCENY-THEFT	2	2	1	3	2	3	3	16
M.V. THEFT					1			1
ARSON								
CRIM MISC.	4	3	3	3			1	14



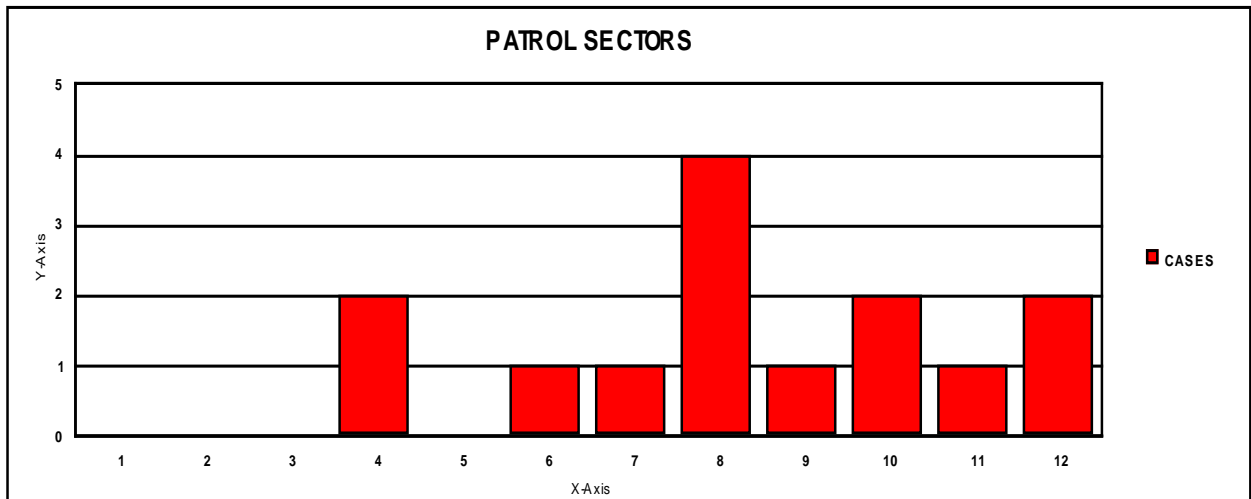
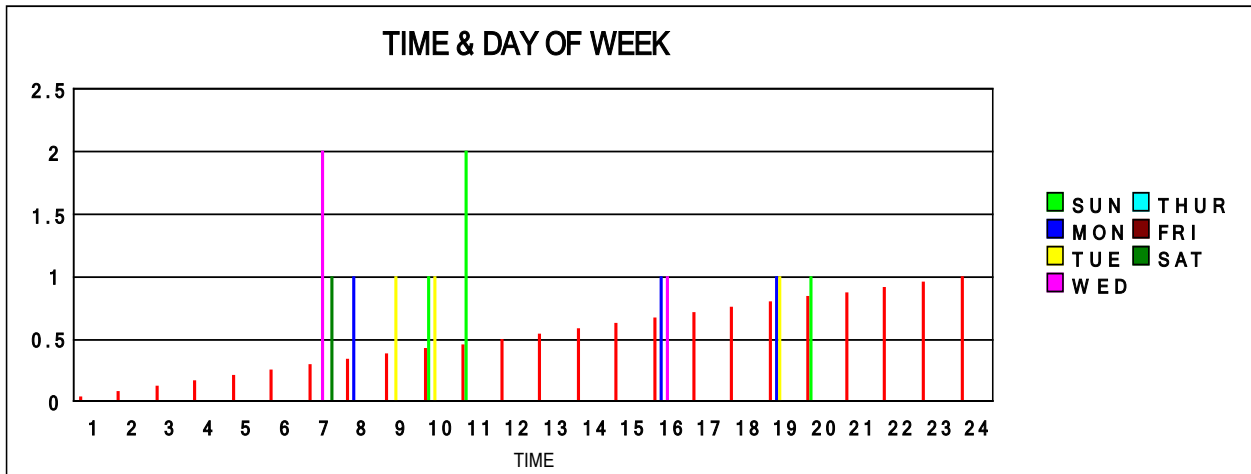
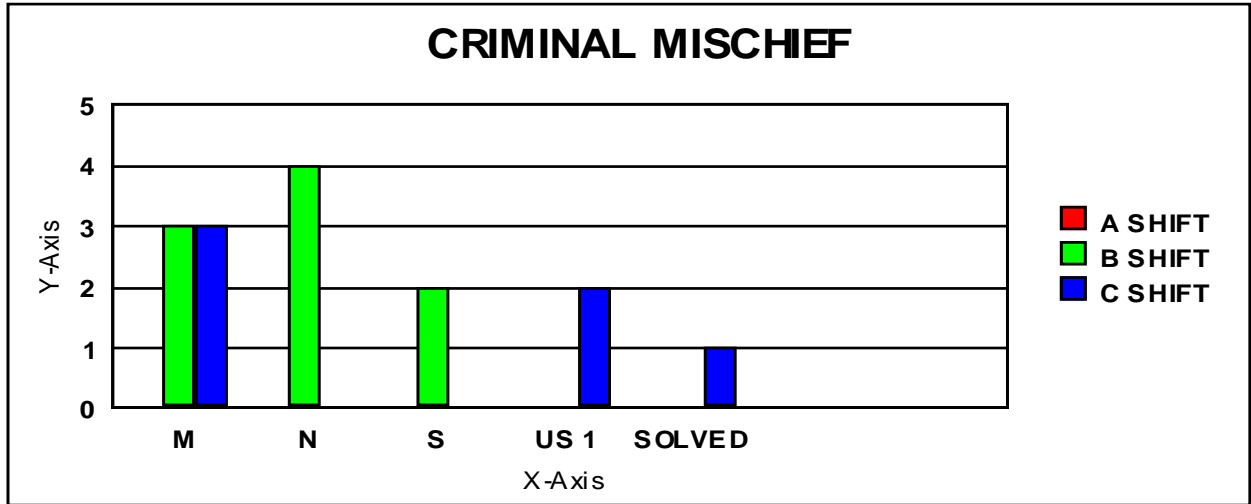
Appendix B

BURGLARY



Appendix C

CRIMINAL MISCHIEF



Appendix D

LARCENY

