



Crime Analysis Report June 2012

Prepared by Det. Sgt. Jeffrey Provencher /68

CALEA 15.3.1

Table of Contents

Crime Analysis Definition.....	3
Crime Analysis Narrative Report.....	4
Appendix A (Crime Graph).....	6
Appendix B (Burglary Graph).....	7
Appendix C (Criminal Mischief Graph).....	8
Appendix D (Larceny Graph)	9

Crime Analysis

A set of systematic, analytical processes directed at providing timely and pertinent information relative to crime patterns and trend correlations to assist the operational and administrative personnel in planning the deployment of resources for the prevention and suppression of criminal activities, aiding the investigative process, and increasing apprehensions and the clearance of cases. Within this context, Crime Analysis supports a number of department functions including patrol deployment, special operations, and tactical units, investigations, planning and research, crime prevention, and administrative services (budgeting and program planning). --Steven Gottlieb et al., 1994, "Crime Analysis: From First Report to Final Arrest."

TO: Office of the Chief

FROM: Det. Sgt. Jeffrey Provencher

SUBJECT: Crime Analysis Report June 2012

*During the month of June 2012. The Guilford Police Department had the following **Part 1** and selected **Part 2** Crimes reported: Reference Appendix A for further information. This information was compiled via the AS400 system utilizing a query of all Part 1 Crimes and select Part 2 crimes from the computer database. A full review of each queried case file report was completed.*

The Guilford Police Department investigated **1052** cases for the month of June.

Murder Cases:

None reported.

Rape Cases:

The was one sexual assault reported and in accordance with Connecticut General Statutes details of all sexual assault cases details remain sealed.

Robbery Cases:

None reported.

Aggravated Assault

There were a total of (2) aggravated assault complaints filed. On was against police and the other was domestic in nature.

Burglary Cases

There were a total of (9) burglary cases filed, seven forced, two non-forced; six residential, one public and two commercial. One has been solved with an arrest made at this time. Reference Appendix B for a graphic representation.

Larceny Cases:

There were a total of (33) larceny complaints filed. A detailed examination of these cases revealed the following details: Of the thirty three cases, (10) were solved. A total breakdown of the types of larceny cases are as follows: (14) general larceny cases, (10) thefts from vehicles, and (9) shoplifting. None of the cases have a distinct pattern or mode operandi. Reference Appendix C for a graphic representation.

Motor Vehicle Thefts:

There were (3) motor vehicle theft complaints. Two of the three motor vehicle thefts occurred on the same night and are believed related, one of the vehicles has been recovered and no arrests have been made at this time.

Arson Cases:

None Reported

Criminal Mischief Cases:

There were a total of (14) criminal mischief cases filed; (3) were mailbox damage, (2) were damage to vehicles, (9) were other miscellaneous criminal mischief. (13) were private property, and (1) was public property. At this time none of the case has been solved. None of the cases were similar. Reference Appendix D for a graphic representation.

Information and Intelligence received on criminal activity:

CTIC provided LEO intelligence during this month.

Intelligence meetings and legal update briefings were held at the New Haven County Investigative Briefing, as well as the Middlesex County Detective Association and the Shoreline Detectives in regard to on-going criminal activity in all our jurisdictions.

Sincerely,

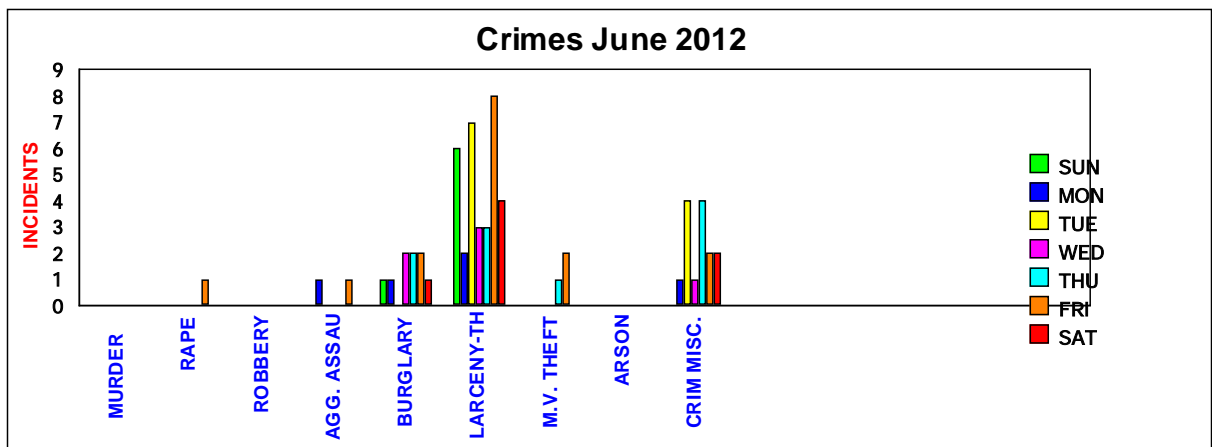
Det. Sgt. Jeffrey Provencher /68

Appendix A

CRIMES

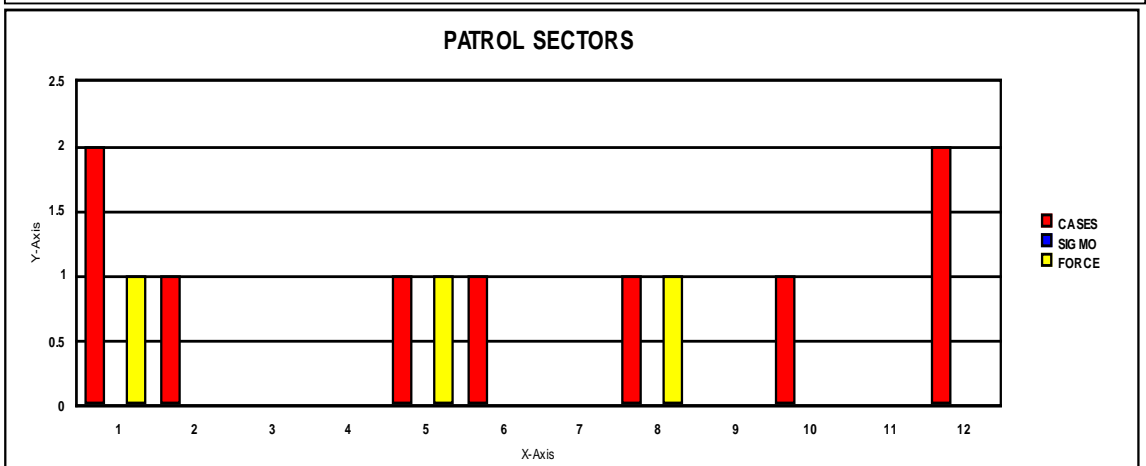
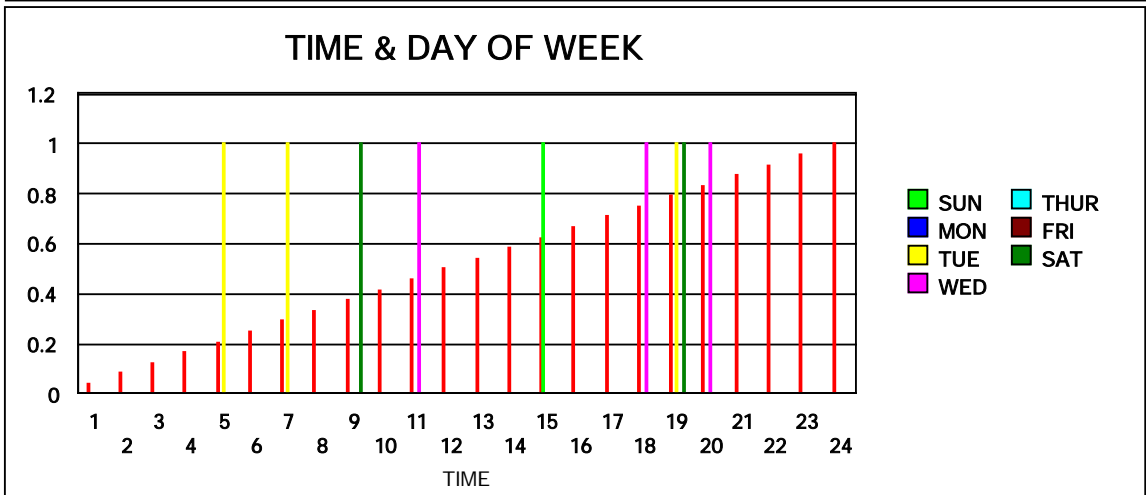
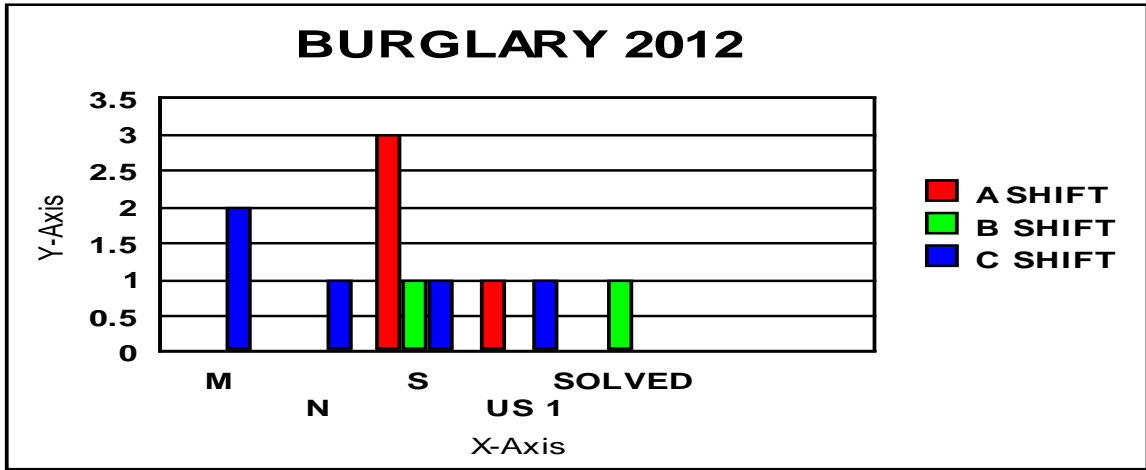
June 2012

	SUN	MON	TUE	WED	THU	FRI	SAT	TOTA
<i>MURDER</i>								
<i>RAPE</i>						1		1
<i>ROBBERY</i>								
<i>AGG. ASSAULT</i>		1				1		2
<i>BURGLARY</i>	1	1		2	2	2	1	9
<i>LARCENY-THEFT</i>	6	2	7	3	3	8	4	33
<i>M.V. THEFT</i>					1	2		3
<i>ARSON</i>								
<i>CRIM MISC.</i>		1	4	1	4	2	2	14



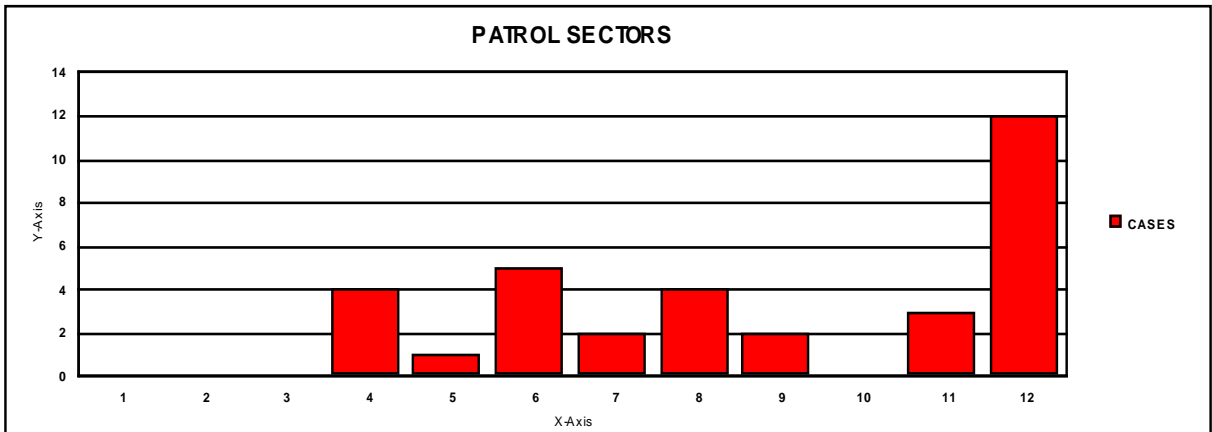
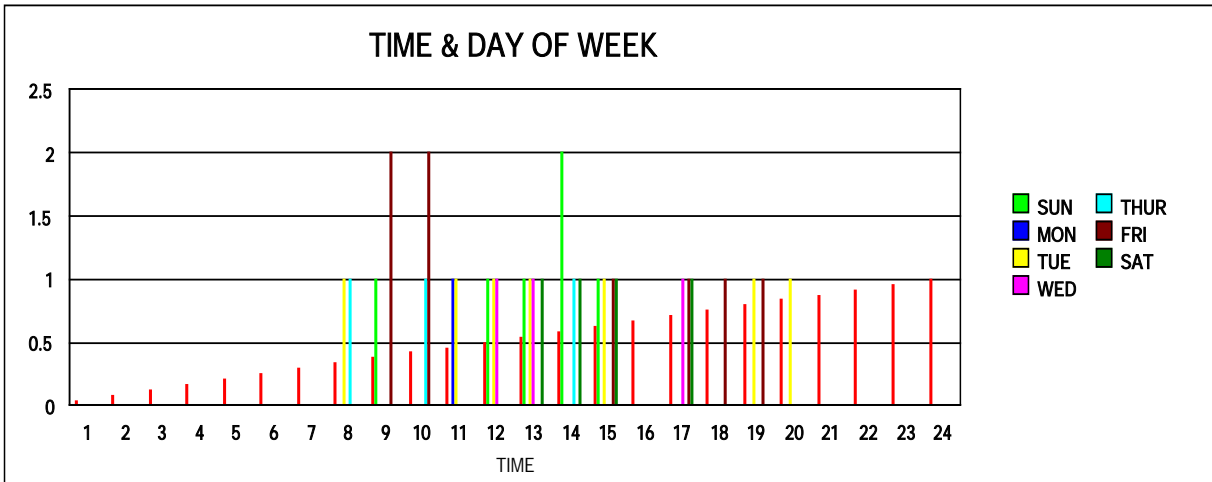
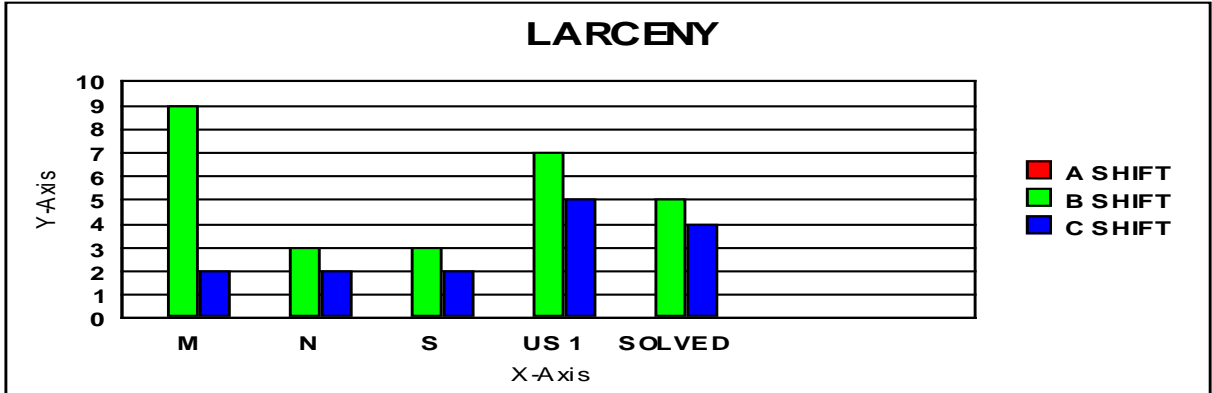
Appendix B

BURGLARY



Appendix C

LARCENY



Appendix D

CRIMINAL MISCHIEF

