



## **Crime Analysis Report August 2012**

**Prepared by Det. Sgt. Jeffrey Provencher /68**

CALEA 15.3.1

# Table of Contents

Crime Analysis Definition.....	3
Crime Analysis Narrative Report.....	4
Appendix A (Crime Graph).....	6
Appendix B (Burglary Graph).....	7
Appendix C (Criminal Mischief Graph).....	8
Appendix D (Larceny Graph) .....	9

## Crime Analysis

A set of systematic, analytical processes directed at providing timely and pertinent information relative to crime patterns and trend correlations to assist the operational and administrative personnel in planning the deployment of resources for the prevention and suppression of criminal activities, aiding the investigative process, and increasing apprehensions and the clearance of cases. Within this context, Crime Analysis supports a number of department functions including patrol deployment, special operations, and tactical units, investigations, planning and research, crime prevention, and administrative services (budgeting and program planning). --Steven Gottlieb et al., 1994, "Crime Analysis: From First Report to Final Arrest."

*TO: Office of the Chief*

*FROM: Det. Sgt. Jeffrey Provencher*

*SUBJECT: Crime Analysis Report August 2012*

*During the month of August 2012. The Guilford Police Department had the following **Part 1** and selected **Part 2** Crimes reported: Reference Appendix A for further information. This information was compiled via the AS400 system utilizing a query of all Part 1 Crimes and select Part 2 crimes from the computer database. A full review of each queried case file report was completed.*

The Guilford Police Department investigated **1176** cases for the month of August.

**Murder Cases:**

None reported.

**Rape Cases:**

None Reported. In accordance with Connecticut General Statutes details of all sexual assault cases details remain sealed.

**Robbery Cases:**

None reported.

**Aggravated Assault**

There was (1) aggravated assault complaint filed. It was domestic in nature.

**Burglary Cases**

There were a total of (3) burglary cases filed, two forced, and one non-forced. (2) were commercial burglaries and (1) at a private residences. No arrests have been made. Reference Appendix B for a graphic representation.

**Larceny Cases:**

There were a total of (21) larceny complaints filed. A detailed examination of these cases revealed the following details: Of the twenty-one cases, (8) were solved with arrests, restitution or warrants pending. A total breakdown of the types of larceny cases are as follows: (13) general larceny cases, (4) theft from motor vehicles and (4) shoplifting. (3) Of the cases are related to a spree of vehicle break ins. Reference Appendix C for a graphic representation.

**Motor Vehicle Thefts:**

None Reported.

**Arson Cases:**

None Reported

**Criminal Mischief Cases:**

There were a total of (32) criminal mischief cases filed; (16) were mailbox damage, (5) were damage to vehicles, (11) were other miscellaneous criminal mischief. (27) were to private property, and (5) were public property. At this time (1) case has been solved. (4) Cases appear to be related, happening in same area on same night. Reference Appendix D for a graphic representation.

**Information and Intelligence received on criminal activity:**

CTIC provided LEO intelligence during this month.

Intelligence meetings and legal update briefings were held at the New Haven County Investigative Briefing, as well as the Middlesex County Detective Association and the Shoreline Detectives in regard to on-going criminal activity in all our jurisdictions.

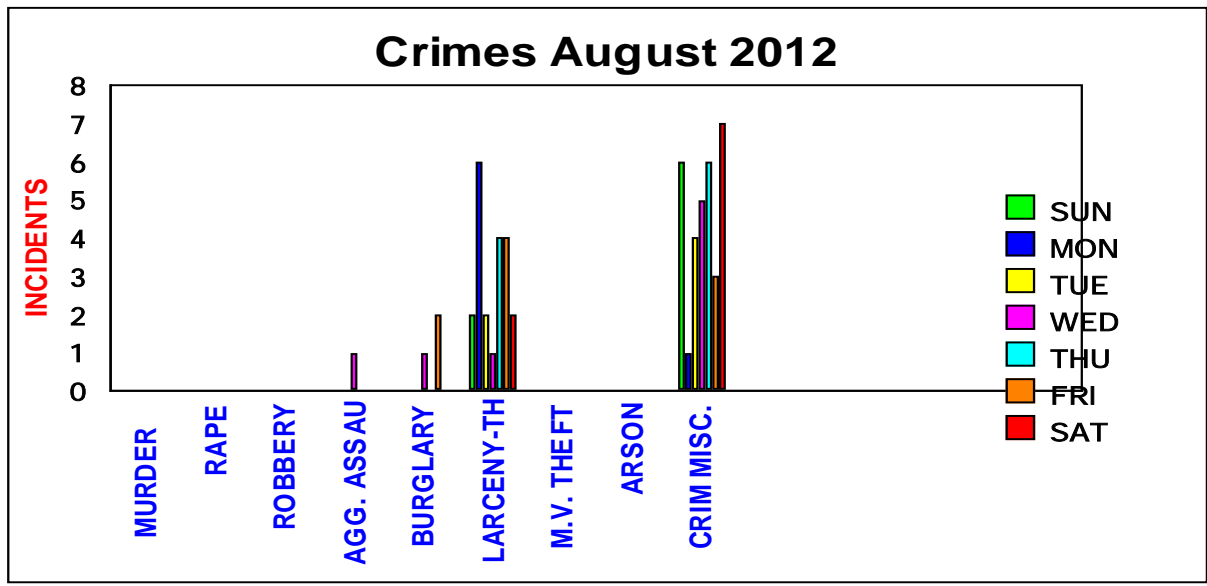
Sincerely,

*Det. Sgt. Jeffrey Provencher /68*

Appendix-A

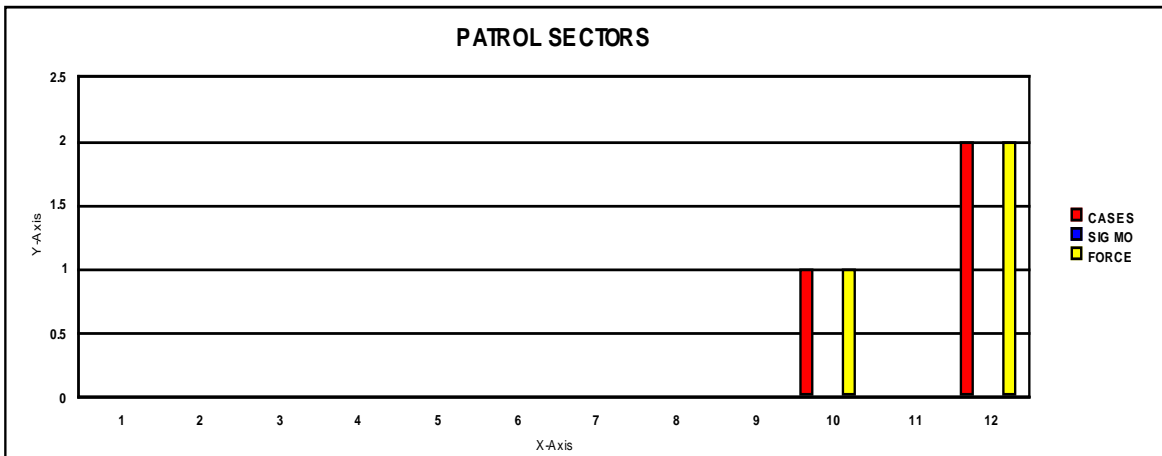
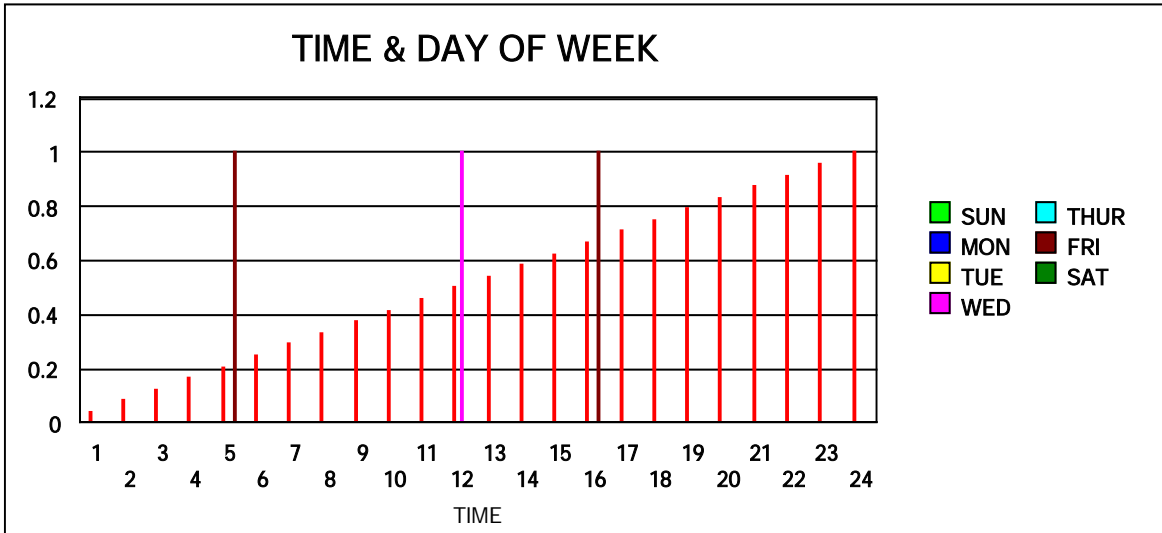
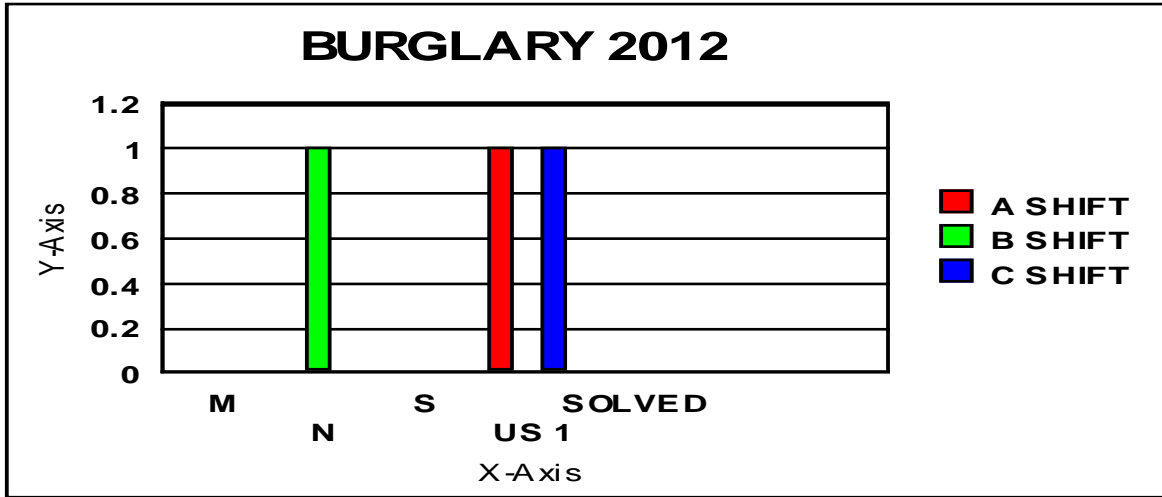
**CRIMES  
AUGUST 2012**

	SUN	MON	TUE	WED	THU	FRI	SAT	TOTAL
<i>MURDER</i>								
<i>RAPE</i>								
<i>ROBBERY</i>								
<i>AGG. ASSAULT</i>				1				1
<i>BURGLARY</i>				1		2		3
<i>LARCENY-THEFT</i>	2	6	2	1	4	4	2	21
<i>ARSON</i>								
<i>CRIM MISC.</i>	6	1	4	5	6	3	7	32
<i>M.V. THEFT</i>								



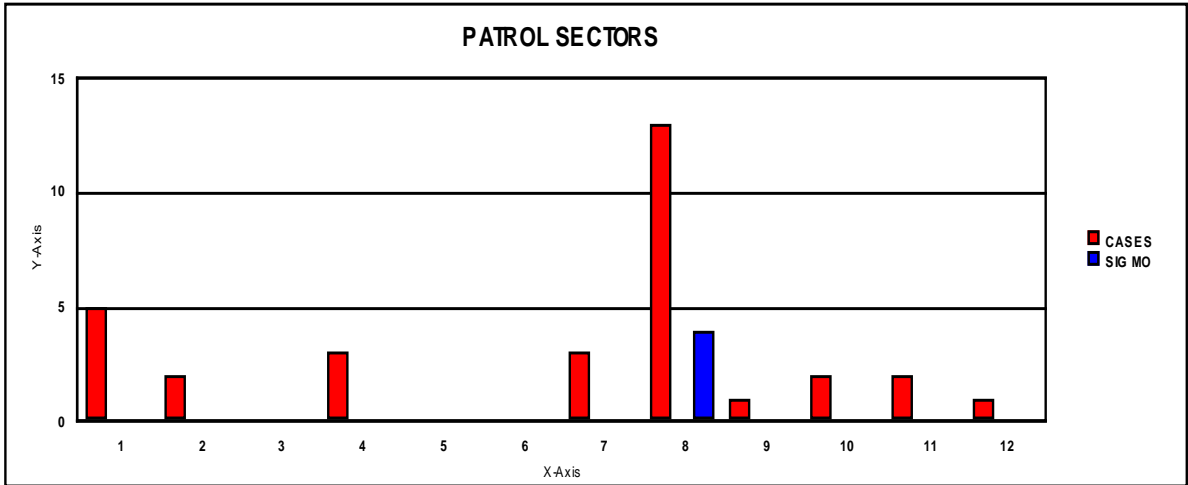
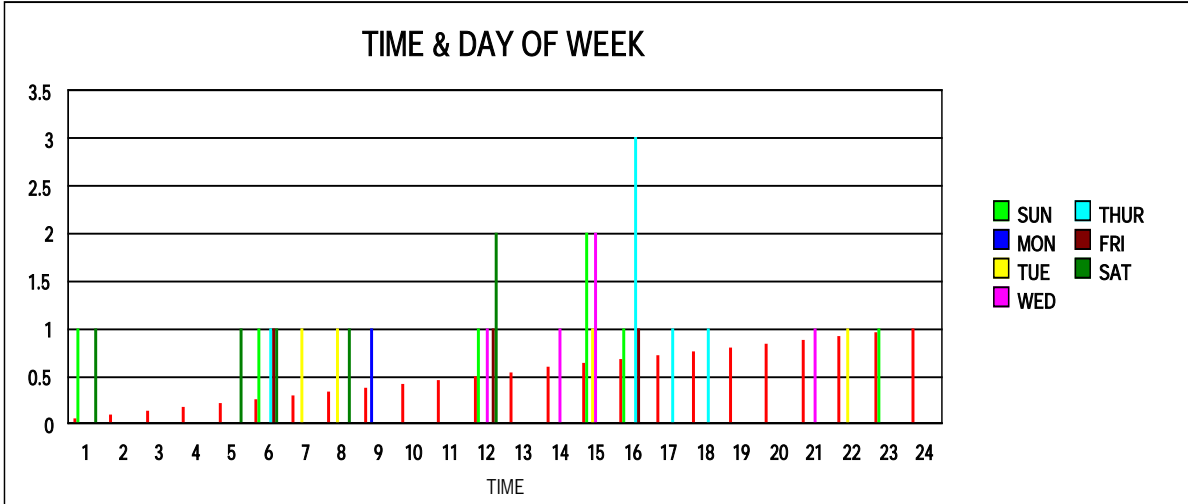
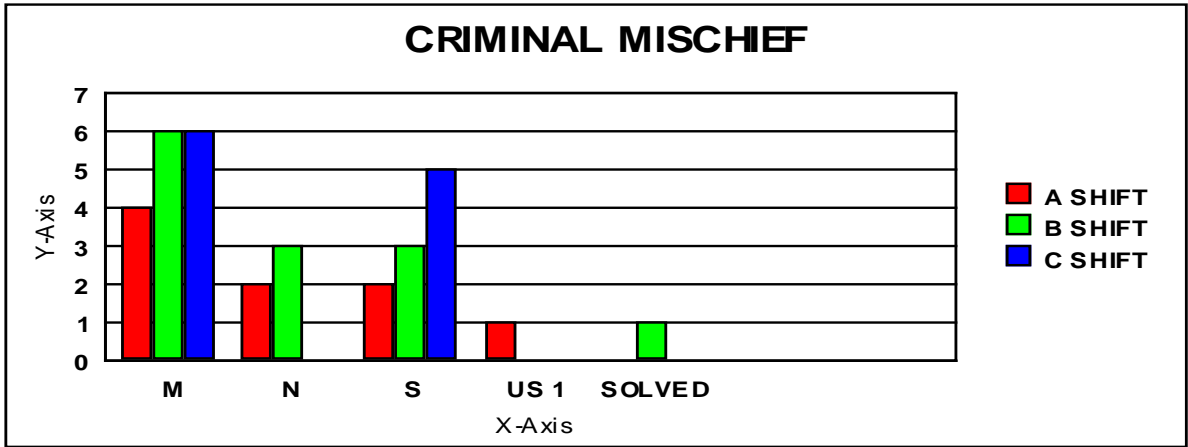
**Appendix B**

**BURGLARY**



**Appendix C**

**CRIMINAL MISCHIEF**



**Appendix D**

**LARCENY**

